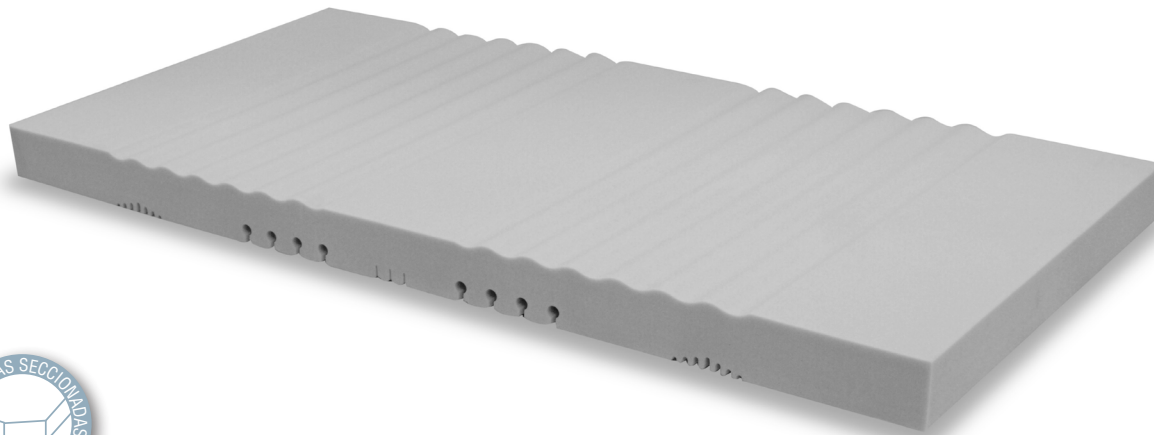


Density150 Mattress



our manufacturing is protected by our patents. Pardo reserves the right to modify, without prior notice, our models and technical specifications described in this data sheet.



HR Polyurethane



Polyurethane density



Natural latex free



Ergonomic material



Conformed material



Breathable material



Fireproof material

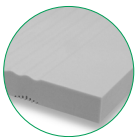


Anti-allergy material

+ Mattress characteristics

Specially designed mattress to be used in hospital and health centres, for patients with low ulceration risk or for mitigate up to grade I pressure ulcers or sores.

+ Core



- 1 High resilience polyurethane foam (30 kg/m³), which open cells structure, AIRFLOW system and mattress perforations, provide a high lightness; 14 cm. thick.

+ Core characteristics

- Corrugated upper layer, surface divided in 5 sections. The corrugated areas are placed in the shoulders and hips sections, to improve the progressive adaptability of the patient.
- Framed inferior layer, in 5 sections, for better adaptability and movement of the sections
- Fireproof core according to the "Furniture and Furnishings (Fire)", BS 5852:2 CRIB2, UNE EN 597-1 and EN 597-2 regulations.

+ Technical specifications

Core height	14 cm.
Core weight	7 kg.
Maximum patient weight (MPW)	190 kg.
Ulceration risk	IV - Low
Available widths	80 / 85 / 90 cm.
Available lengths	180 / 190 / 200 cm.

High performance AIRFLOW system, it allows a great adaptability and breathability

- All foams are Oeko-Tex class I and REACH certified.
- Symmetric mattress allows using indistinctly the head or feet areas.
- OPTIONAL: Cut the mattress corners for better adaptability to beds.

