



## Features

The armchairs are specially design to be used in hospitals, clinics, nursing homes and also in home care.

The armchair is made of a tubular steel structure with polyester coating, with upholstered seat, backrest and footrest sections with multiple colour options.

The metallic structure makes it robust and resistant to usage.

The armchair can be articulated in two sections due to a gas spring driven by a lever located in one side of the armchair.

It also has foldable armrest to allow side access.

Extensible footrest incorporated.

Depending on the intended user several configurations are available based on the quantity of wheels it has or the accessories can be placed in it.

### Options:

For patient use several accessories can be incorporated such as: table, tank holder and IV pole.



Gas spring



Ø Wheels



Max. length



Max. width



Total height



Seat height



Seat depth



Backrest tilt



MPW



W42491901  
UNE-EN ISO 13885  
UNE-EN ISO 13001

ER-0447/2015  
GS-0011/2015

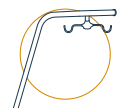
ER-0447/2015  
GS-0011/2015

GA-2015/0182

## Technical information

Total length (seated position) (A)	850 mm.
Total length (tilted position) (A*)	1950 mm.
Total width with armrests (B)	645 mm.
Total height (C)	1090 mm.
Seat height (D)	500 mm.
Seat width (E)	480 mm.
Maximum backrest tilting angle (relative to the seat) (F)	110°
Maximum reclined backrest tilting angle (relative to the seat) (G)	170°
Armchair weight	33 - 39 kg. (según modelo)
Maximum patient weight (MPW)	135 kg.

### Accessories



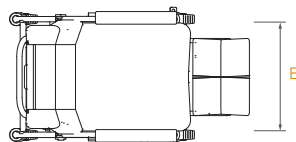
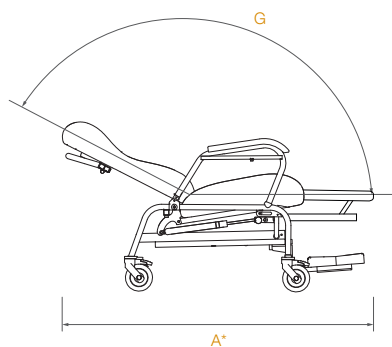
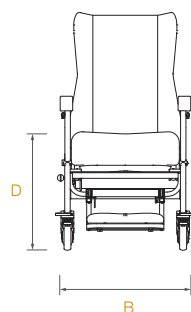
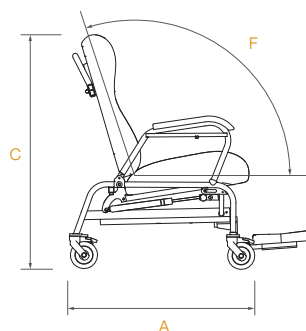
IV Pole



Tank holder



Side table



## Upholstery

### Silvertex



Cream



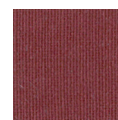
Shiitake



Safran



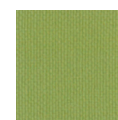
Orange



Wine



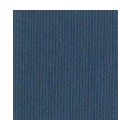
Red



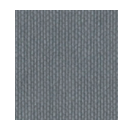
Pistacho



Delft

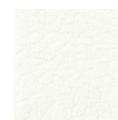


Sapphire

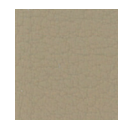


Titanium

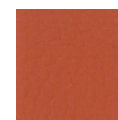
### Valencia



Weiss



Beige



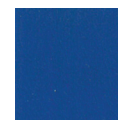
Nectarine



Orange



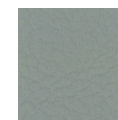
Rot



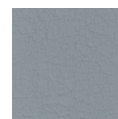
Delft



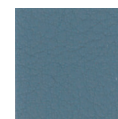
Jade



Laurel

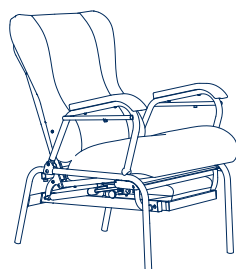


Perle



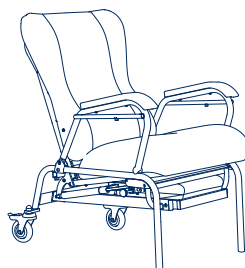
Titan

### Companion versión with legs



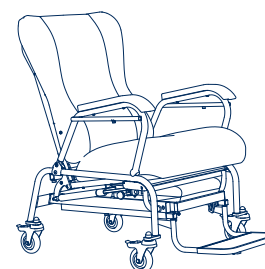
- 4 legs.
- With handle.
- Without accessories.
- Without footrest.

### Patient versión with two wheels



- 2 legs.
- 2 wheels Ø 100 mm.
- With handle.
- Optional accessories.

### Patient versión with four wheels



- 4 wheels Ø 100 mm.
- With handle.
- With footrest.
- Optional accessories.